

Internet Blocking Tool (InetBlocker)

Internet Blocking Tool application has been developed for an easy ISA server control by inexperienced users (common teachers, not network administrators). It allows blocking or unblocking internet connection for defined groups of computers without direct work with ISA server in an easy and quick way. Authorized persons (teachers) then can control classroom internet connection in a simple application environment.

Internet Blocking Tool (InetBlocker)

InetBlocker application enables blocking the internet connection to selected computers (or groups of computers) and is designated for schools using Microsoft ISA Server 2004 or 2006 application. Basic properties of InetBlocker are:

- It is divided into two parts – for administrators and for users (each is in its own .exe file).
 - Administrator's part of the application allows the entire configuration, settings and is designated for network administrators. Computers can be divided into logical groups (e.g. classroom 1, classroom 2, staffroom, etc.) in this application and a flag, whether they may use Internet or not, can be set for each group.
 - User's part of the application allows only banning and permitting internet connection for groups pre-defined by administrator. Typically this is suitable for teachers that don't have enough knowledge and information about configuration of the application.
- It is possible to run this application either locally on the server where ISA server is installed, or remotely from whichever station in the network (recommended).
- It is free to download at <http://www.codeplex.com/inetblocker/Release/ProjectReleases.aspx>

For more information about the application firewall, please read the [MS ISA Server 2006 Guide](#), where you can find the description of the product, requirements for the installation, installation itself and configuration, with more than 100 pictures.

Internet Blocking Tool (InetBlocker)

Internet Blocking Tool application has been developed for an easy ISA server control by inexperienced users (common teachers, not network administrators). It allows blocking or unblocking internet connection for defined groups of computers without direct work with ISA server in an easy and quick way. Authorized persons (teachers) then can control classroom internet connection in a simple application environment.

Application installation

Internet Blocking Tool (IBT) application is designed for quick blocking or unblocking of internet during the lesson. Therefore it will be typically installed on the workstations, e.g. on the lecturers' computers in the classes. This application uses components accessible within the ISA server administrative console. Therefore it is necessary that console for ISA server administration will be installed on those workstations that will use this application.

Further it is necessary to have .NET framework 2 component installed. If .NET framework is not installed, it is possible to download it from Microsoft website or download and install it automatically within the Automatic updates (*Windows Update*).

Installation process:

1. Log in to the workstation as an administrator.
2. Check, whether console for ISA server administration is installed on the workstation. This console is usually located in the *Start* menu, *Programs*, *Microsoft ISA server*. If this console is not present on the workstation, install it from the ISA server installation medium.
3. If you don't have .NET framework 2 installed, install it. *Internet Blocking Tool* application installer checks the presence of this component. If it isn't to your disposal, it will redirect you to web, where you can download it.
4. Run the *Setup.exe* program from the folder with installation files.
5. On the introductory screen of the installation guide, press *Next*.
6. On the next screen of the guide you can choose the target directory of the installation and you can choose, whether the application will be installed to the current user or to all users of this computer. Install this application for all users – all users will have the shortcut for this application in the *Start* menu.
7. Finish the installation.

After the installation of the application, an *InetBlocker* item appears in the *Start* menu. Two versions and help are available.

- ☐ ***InetBlocker*** – allows quick blocking or unblocking of internet connection to defined groups of computers
- ☐ ***InetBlockerAdmin*** – besides the functions of the previous application it allows ISA server IP address setting and defining groups of computers, which will be blocked by this application.

ISA server setting

It is necessary that workstations of *Internet Blocking Tool* users have the possibility of ISA server remote control, so that these users have the possibility to control the internet connection for groups of computers. IP addresses of all computers that will be able to control the ISA server have to be included in the *Remote Management Computers* group in the ISA server console.

1. Log in to the ISA server and run the console for ISA server administration.

2. From the navigational tree choose *Firewall Policy*. In the right panel of the console choose *Toolbox, Network Objects* and by double click on *Remote Management Computers* open the editing of this group
3. With the *Add* button add those computers that will be able to control ISA server remotely. It is possible to define an IP address of the computer; range of IP addresses or subnetwork.
4. Save the changes of the *Remote Management Computers* group and apply these settings to ISA server.

If other users than administrators (e.g. teachers) will have the possibility of blocking the internet connection, it is necessary to assign an administrative role to of ISA server to these users or groups. Since these are the changes of ISA server configuration, these users have to have the *ISA server Full Administrator* role.

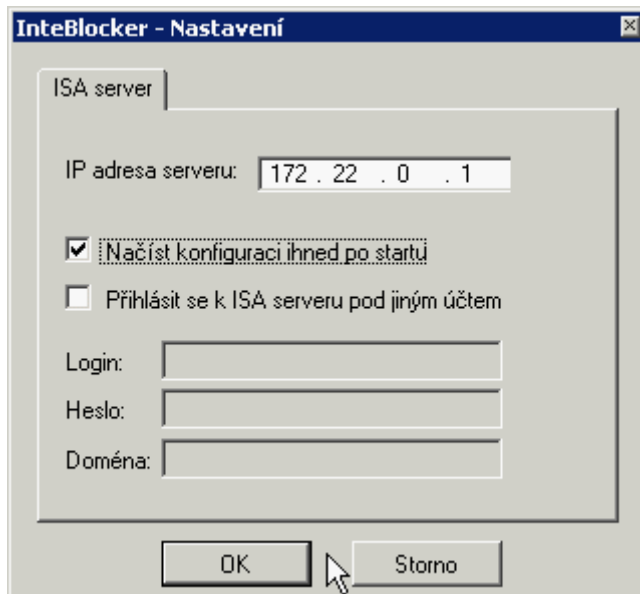
1. Log in to the ISA server and run the administration console.
2. In the navigation panel choose *Configuration* and *General* item.
3. In the middle panel click on the *Assign Administrative Roles* link.
4. With the *Add* button you can assign administrative role to users.
5. Insert the name of the user or the group in a form *domain/name* or with the *Browse* button find the user or group in Active Directory.
6. Choose the *ISA server Full Administrator* administrative role.
7. Save these settings and apply these changes to ISA server.

Chosen users (teachers) now have the possibility to interfere with the ISA server settings from chosen computers. Because of the security reasons we recommend to create a service account and delegate the *ISA server Full Administrator* right. See the following paragraph.

InetBlockerAdmin

After the installation of the *Internet Blocking Tool* run the *InetBlockerAdmin* application under the administrative account from the *Start* menu and insert the IP address of the ISA server there.

1. Log in to the workstation as an administrator.
2. From the *Start* menu run *InetBlockerAdmin*.
3. After running of the application click on *Settings* button.
4. In the settings window insert the internal IP address of administrated ISA server. Then you can adjust the application, so that it will automatically check the current ISA server settings at startup or it will log in to the ISA server under different username.
5. If you adjust the application, so that it will log in under different username, this name has to have the right of full ISA server administration (*Full Administration* role). If you don't fulfill this, application will log in to the ISA server under the current user's account.
6. Confirm settings by *OK* button.

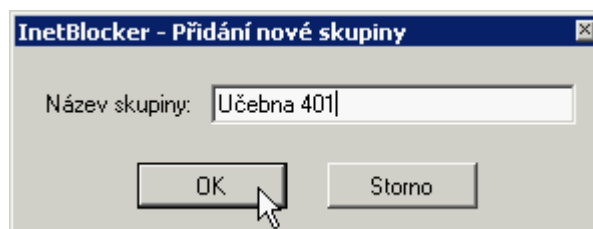


After you set the IP address of the ISA server, you can download from the ISA server rules blocking internet computers for given computers by the *Load Rules* button. These rules are specific access rules, which are created by this application on ISA server. Therefore during the first run there are none rules for this application, so none will display.

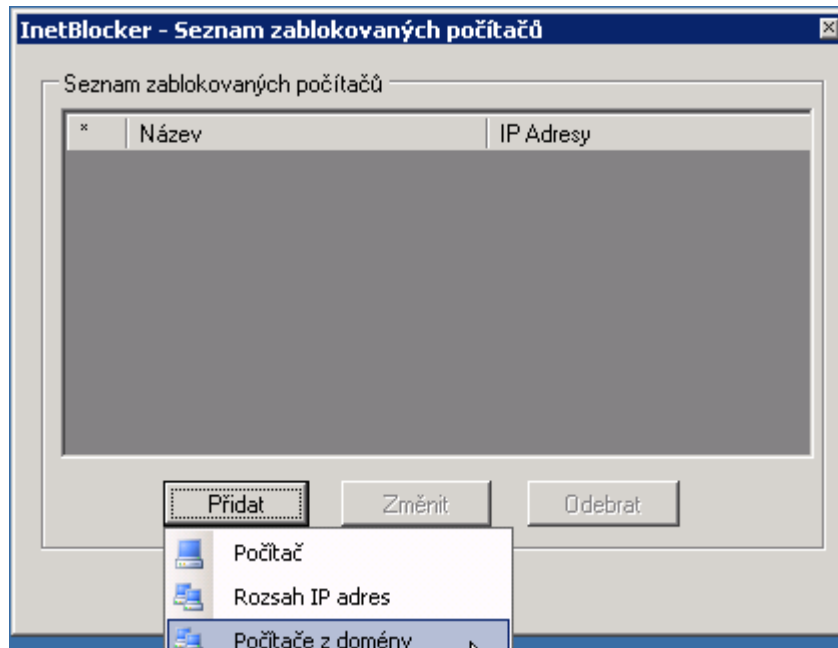
Creation of the group

InetBlockerAdmin application is able to create groups of computers, which will be operated by this application.

1. By the *Add Group* button create a new group and name it.



2. Afterwards, in the list choose the created group and click the *Change Group* button. Editing window opens and you can insert computers into this group.



3. With the *Add* button you can add computers into this group. You can define them on the basis of IP addresses or IP addresses range. With the *Domain Computers* item you can display the list of those computers that were connected to the domain during last 14 days and you can choose which computers will be assigned to this group.
4. Finish the editing by the *OK* button.
5. After you finish creating and editing of groups, you can update these settings onto the ISA server with the *Save Changes* button.

Result of work of this application is creating of defined groups in the ISA server Toolbox and creating of firewall access rule with the highest priority, which blocks the entire internet communication for defined groups of computers.

InetBlocker

Second application, *InetBlocker*, is a simplified version of *InetBlockerAdmin*. *InetBlocker* uses defined groups of computers and settings. It does not allow changing the IP address of administrated ISA server, nor creating and editing of groups of computers. *InetBlocker* can only block or unblock the internet connection for defined groups of computers. So it is application for inexperienced users (teachers), which can, by a few clicks, affect the internet connection for selected group of computers (class).

After running of the application by the *Load Rules* button, an application downloads current settings for defined groups from the ISA server. User then can block internet with the checkbox beside the group name and with the *Save Settings* button apply this setting to the ISA server.

Warning: This application logs in to the ISA server as a current system use or as a user defined in the InetBlockerAdmin settings. If this user does not have sufficient rights for

communication with ISA server or administration of ISA server, there will be a problem with the download of current configuration or with saving of new configuration!

Summary

InetBlocker and *InetBlockerAdmin* applications offer simplified interface for quick configuration of ISA server. For their correct working it is necessary:

- ☐ Workstation with these tools has to have ISA server administration console installed
- ☐ Workstations have to be members of the *Remote Management Computers* group in ISA server console *Toolbox*.
- ☐ Users, who will use these application have to have ISA server administrative role assigned or these applications have to be run from an account that has the right to configure the ISA server.